

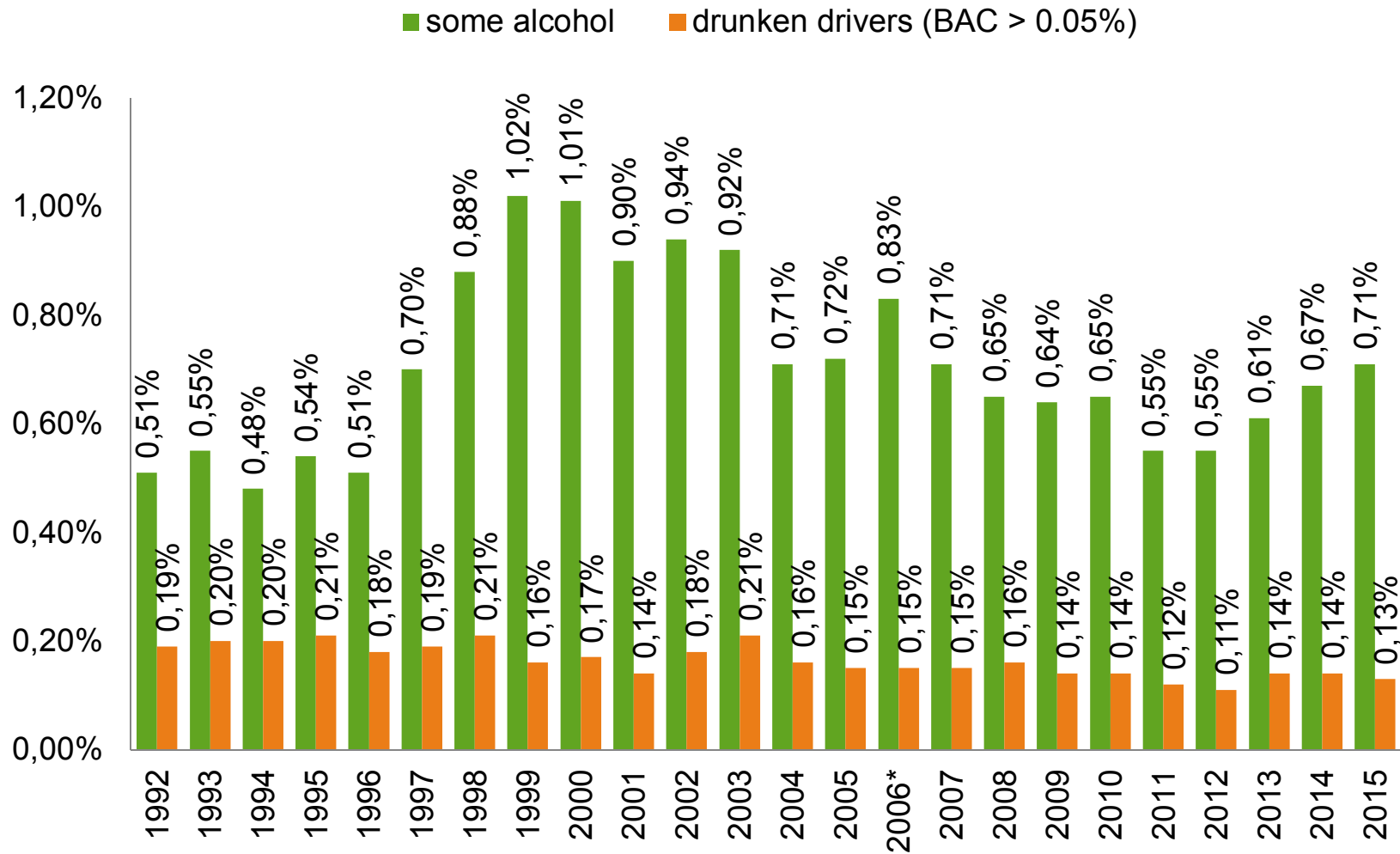


Remember. Respect. Think ahead.

LIKENNETURVA

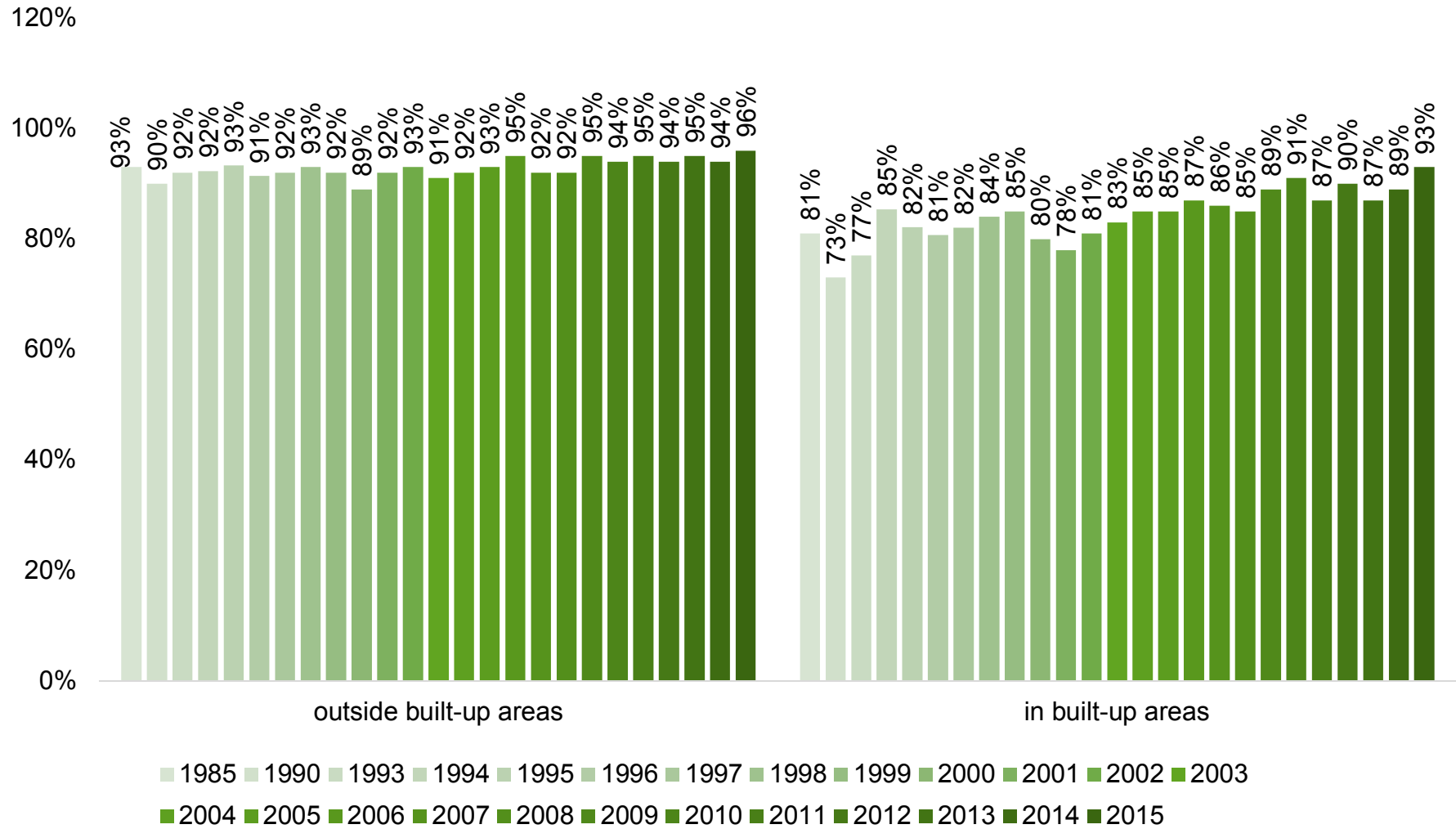
Monitoring traffic behaviour

Drunk driving as proportion in total traffic flow

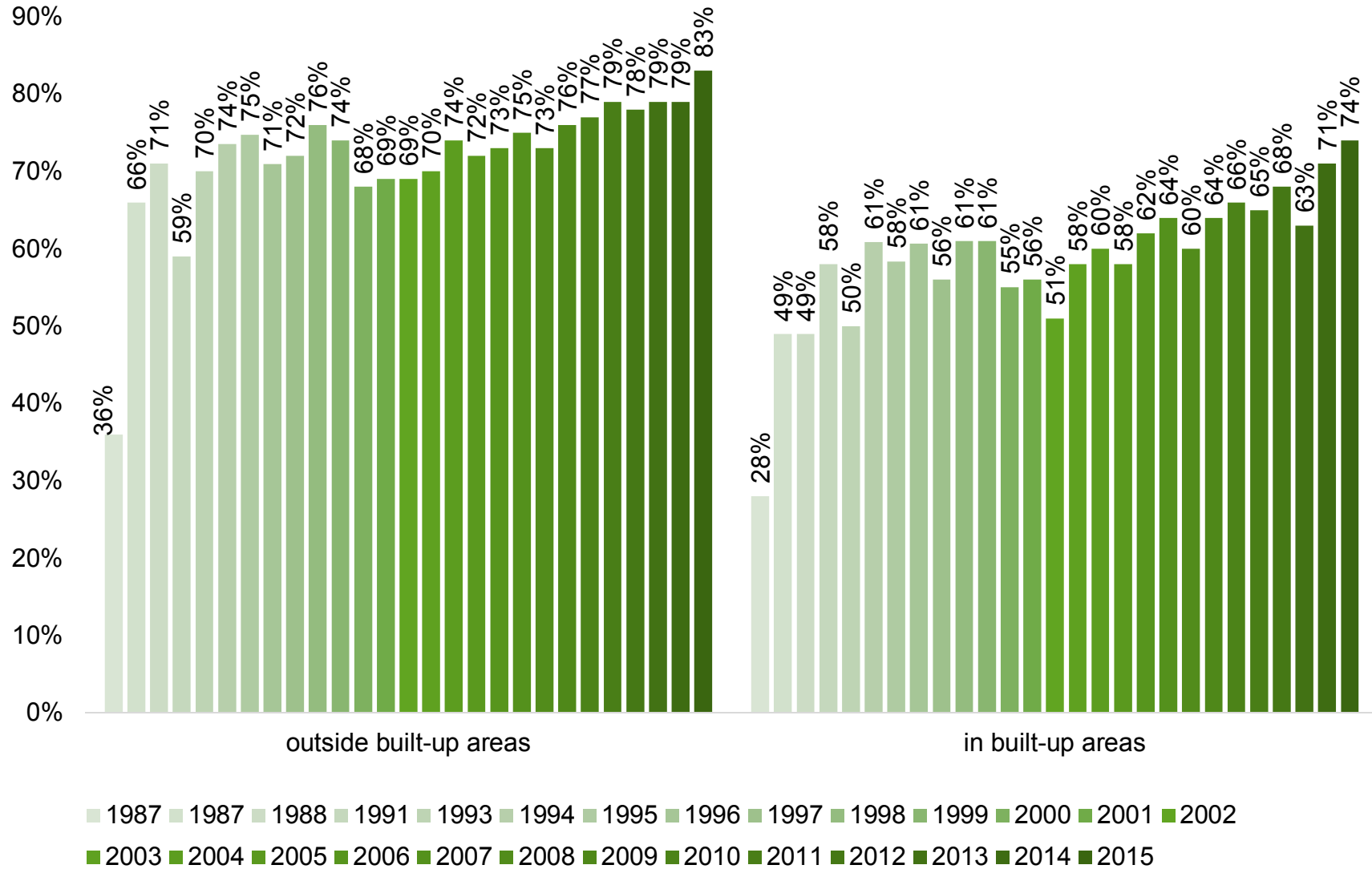


Source: Police & National Institute for Health and Welfare (THL)

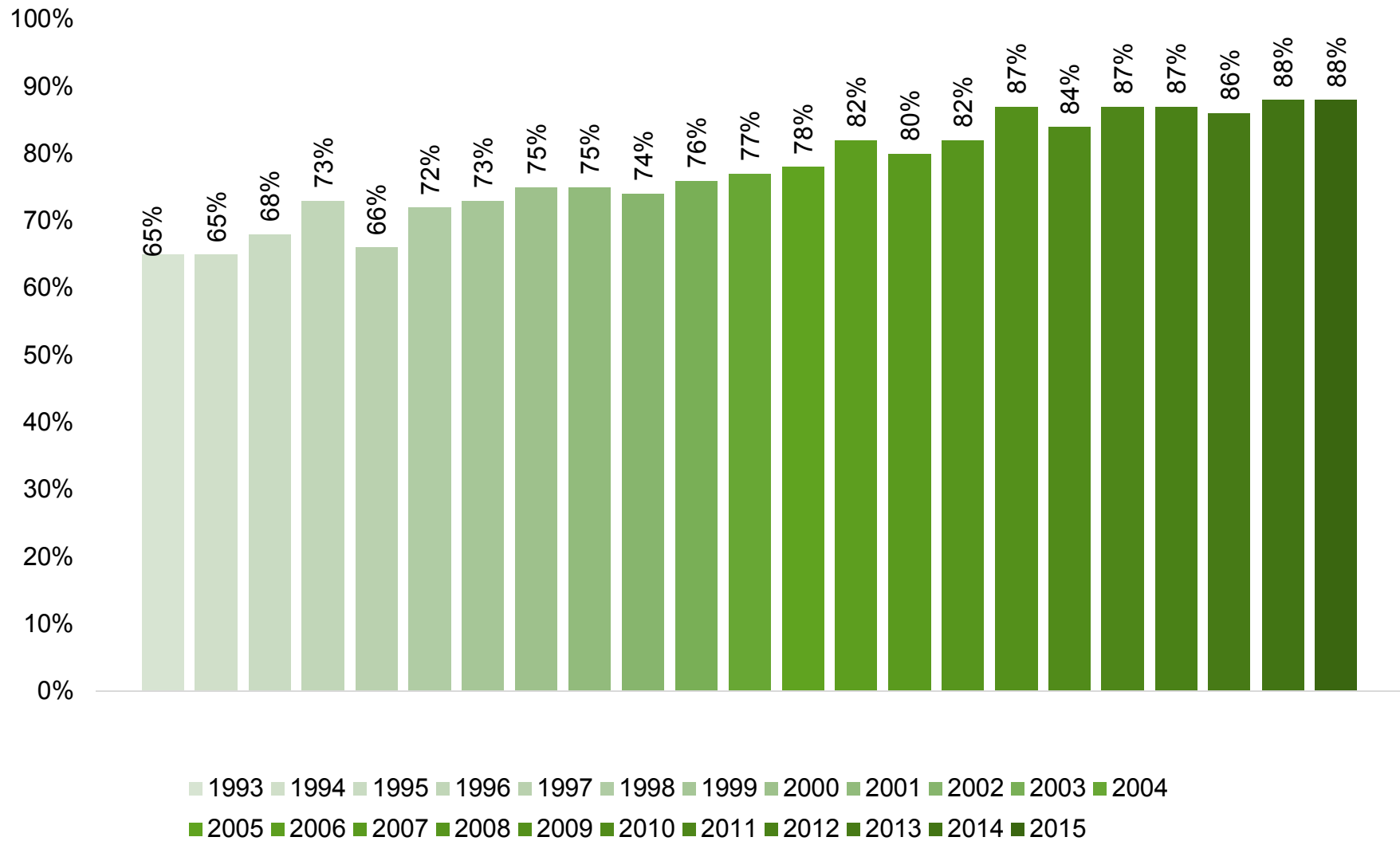
Seat belt use in front seats of cars



Seat belt use in front seats of vans

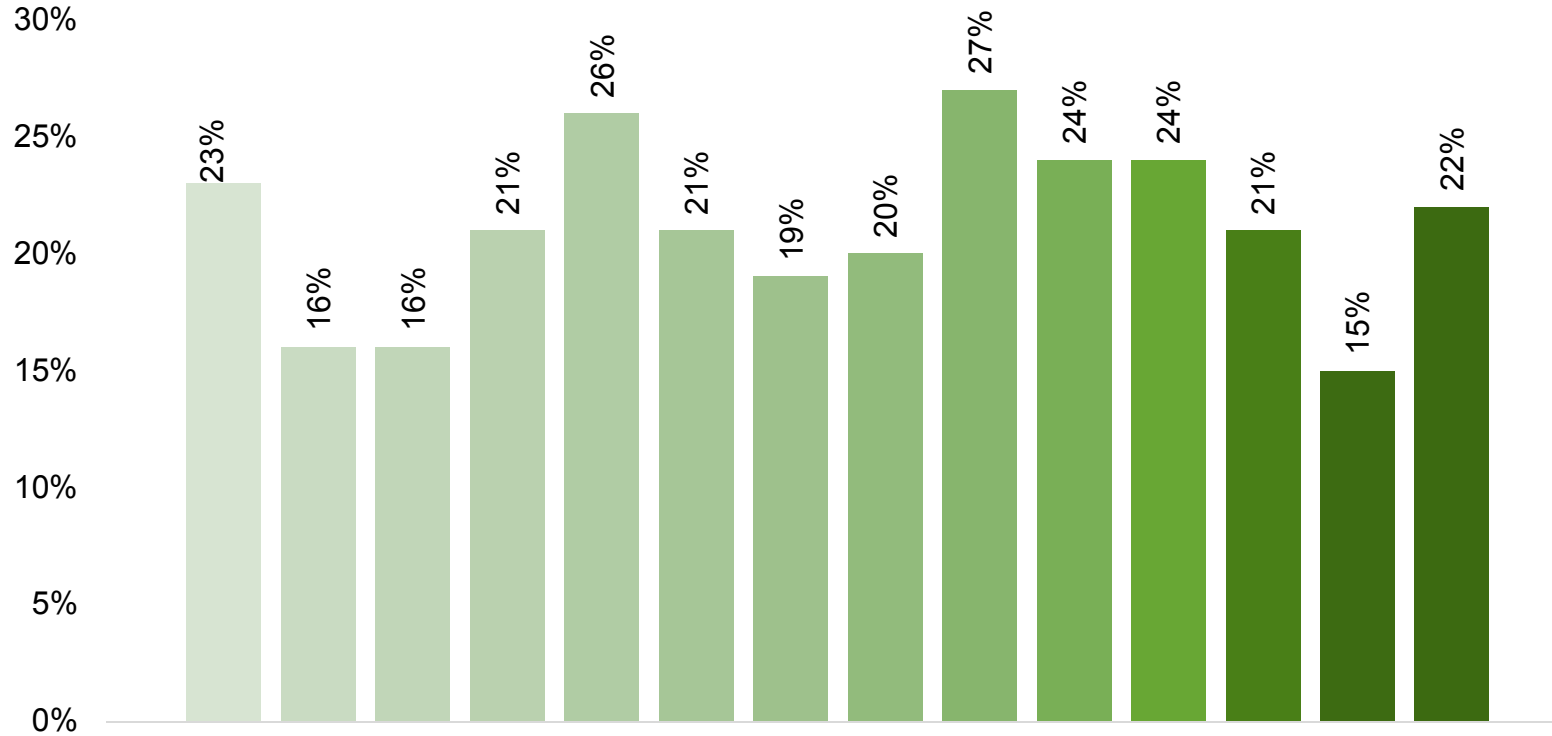


Seat belt use in rear seats of cars



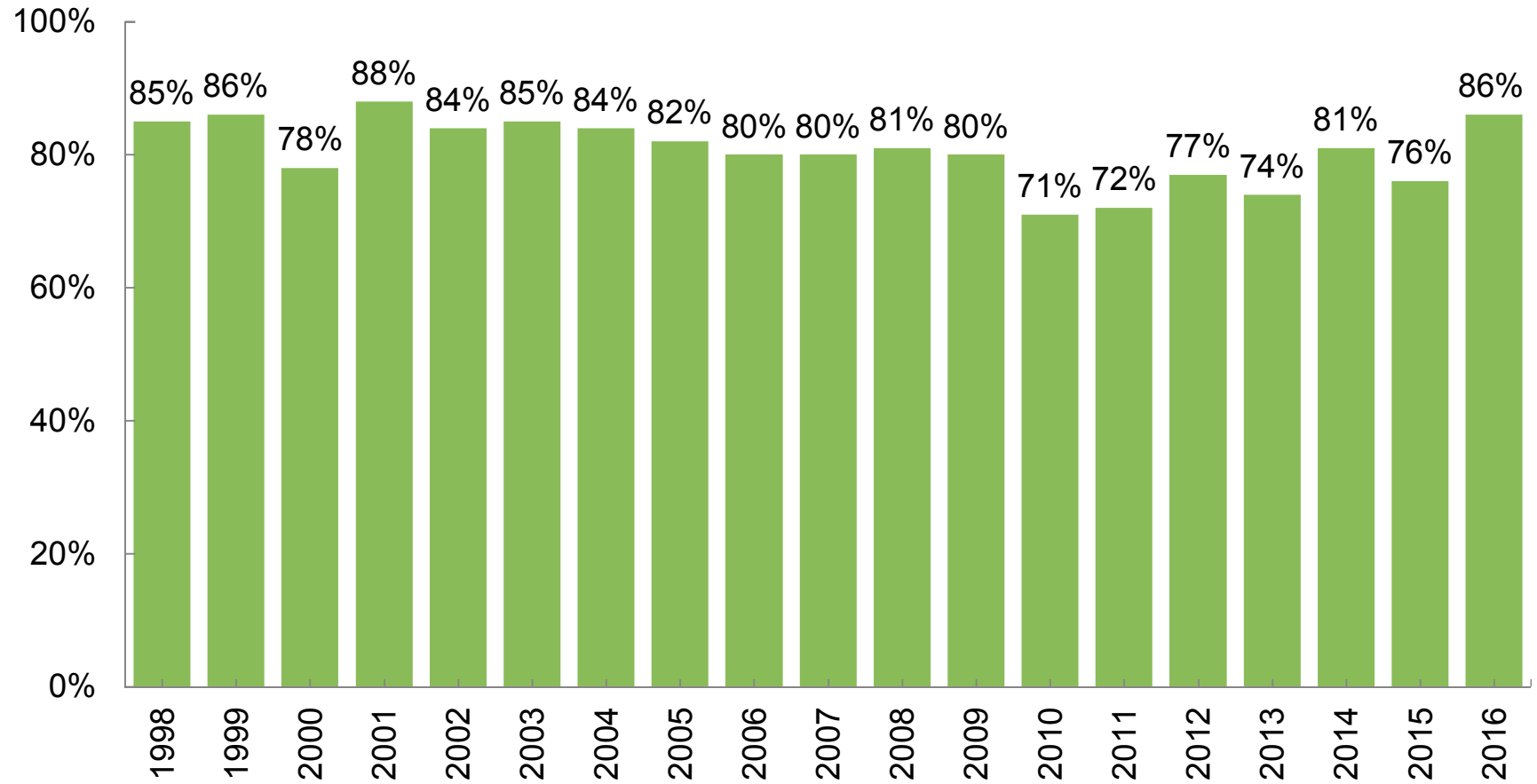
Red light running

% of sequences



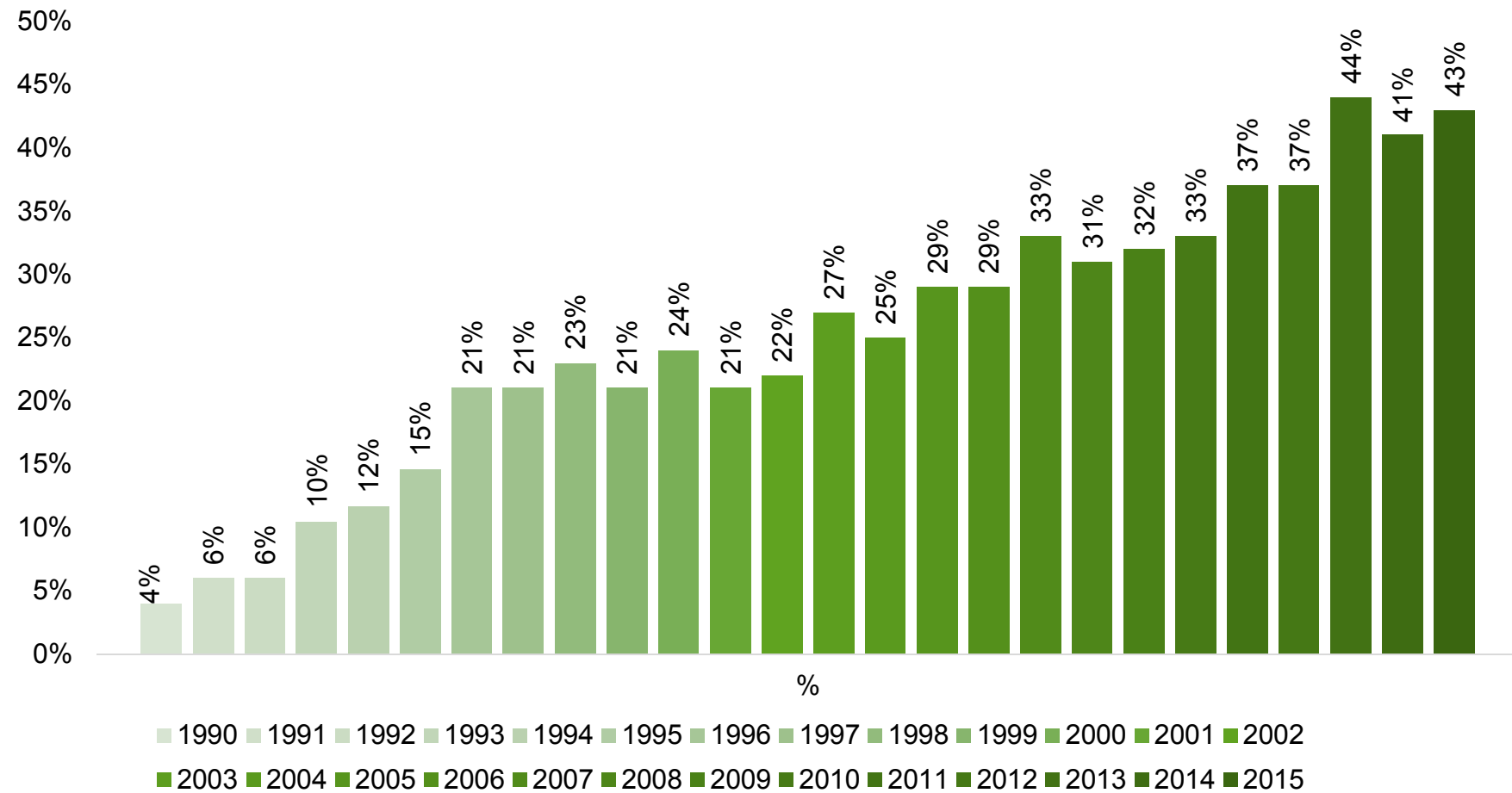
■ 2002 ■ 2003 ■ 2004 ■ 2005 ■ 2006 ■ 2007 ■ 2008 ■ 2009 ■ 2010 ■ 2011 ■ 2012 ■ 2013 ■ 2014 ■ 2015

Use of direction indicators

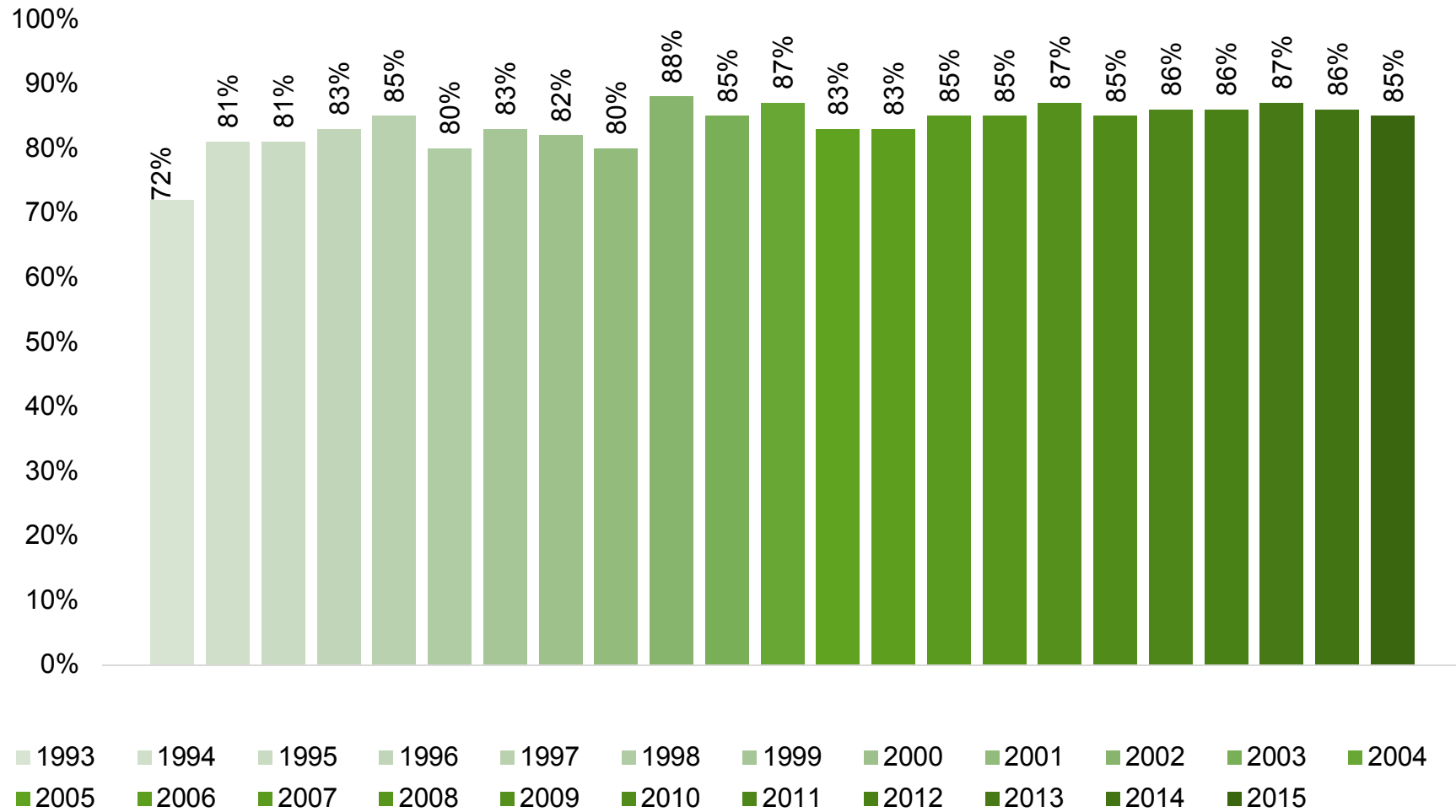


2016 some changes in measurements

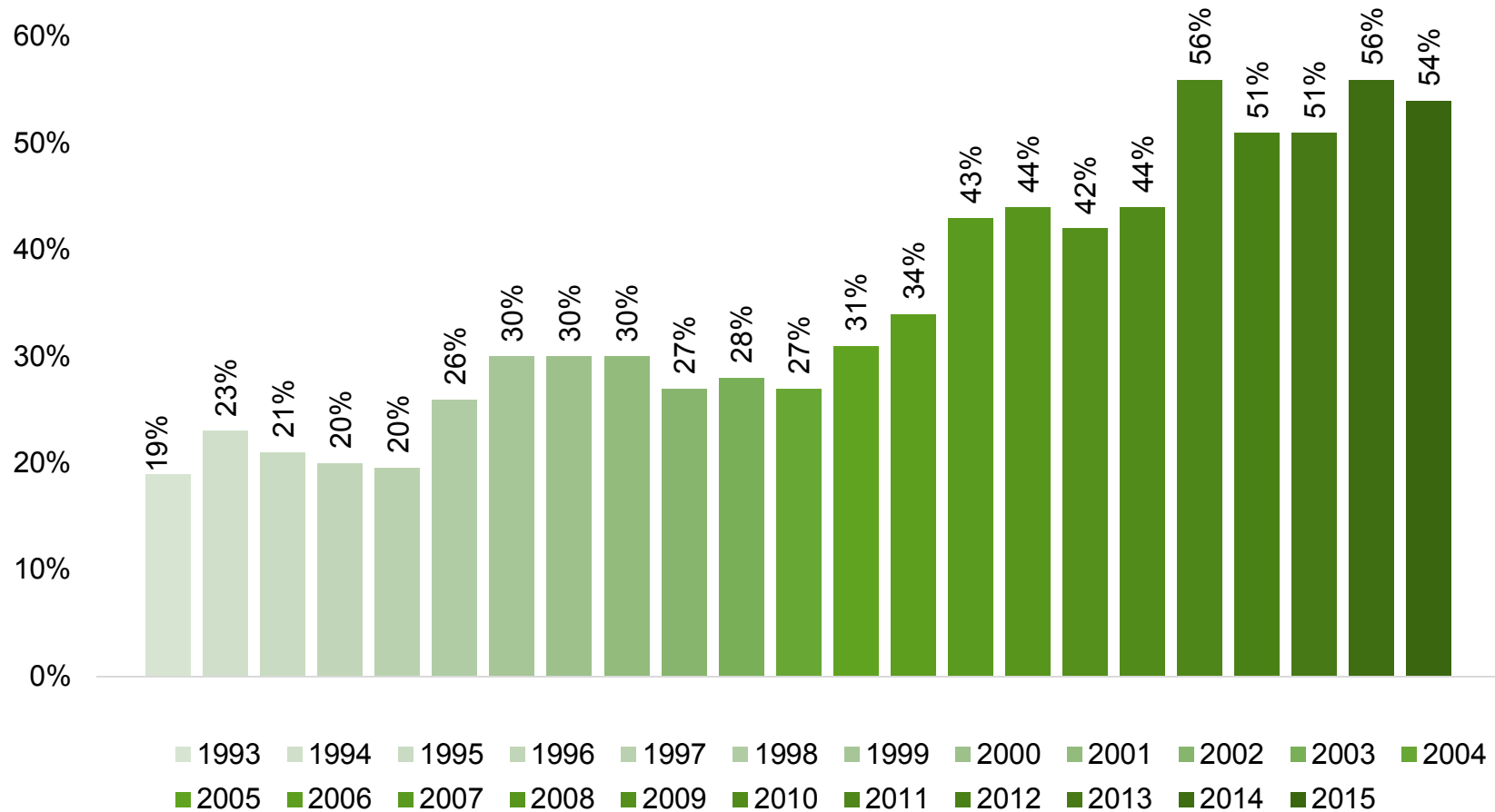
Use of bicycle helmets



Pedestrians compliance of red lights



Pedestrians' use of reflectors in built-up areas



The main objective of traffic behavior measurements is to monitor the behavioral changes that take place. The measurements do not show how common the observed phenomenon is in all regards. For example, the drivers' running of the red light or use of signal varies a great deal depending on the measurement location. Therefore the results do not depict the studied phenomena in general, but due to standardized measurement methods they relate information about the changes in traffic behavior.

- For more information from Liikenneturva, please contact: Leena Pöysti leena.poysti@liikenneturva.fi